

WOUND EDGES

"Let's Get Edgy"

Nancy Morgan
WOUND CARE

1 **DEFINED**

Wound edges can be seen clearly and can tell where the wound edges start and stop.



2 **UNDEFINED**

Wound edges are unclear and difficult to define the wound outline.



3 **ATTACHED**

Wound edges are attached to the wound bed.



4 **UNATTACHED**

Wound edges are unattached from the wound bed.



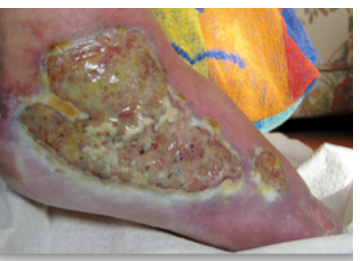
5 **FIBROTIC HYPER-KERATOTIC**

Excessive accumulation of keratin, creating a callus that can build up on the wound edges.



6 **MACERATED (SOFT)**

Oversaturated skin is softened and has a whiteish appearance.



7 **EPIBOLE**

Wound edges are curled or rolled under.

